



**YOUR WAREHOUSING & TRANSPORTATION SPECIALISTS
FOR THE NORTHWEST REGION**

SHIP TO DOOR

**A CONVERSATION ABOUT THE MOVEMENT OF INTERNATIONAL
FREIGHT IN THE PACIFIC NORTHWEST.**

CES/CFS/WAREHOUSE PERSPECTIVE

WHAT IS A CES & CFS?

CES (Central Examination Station)

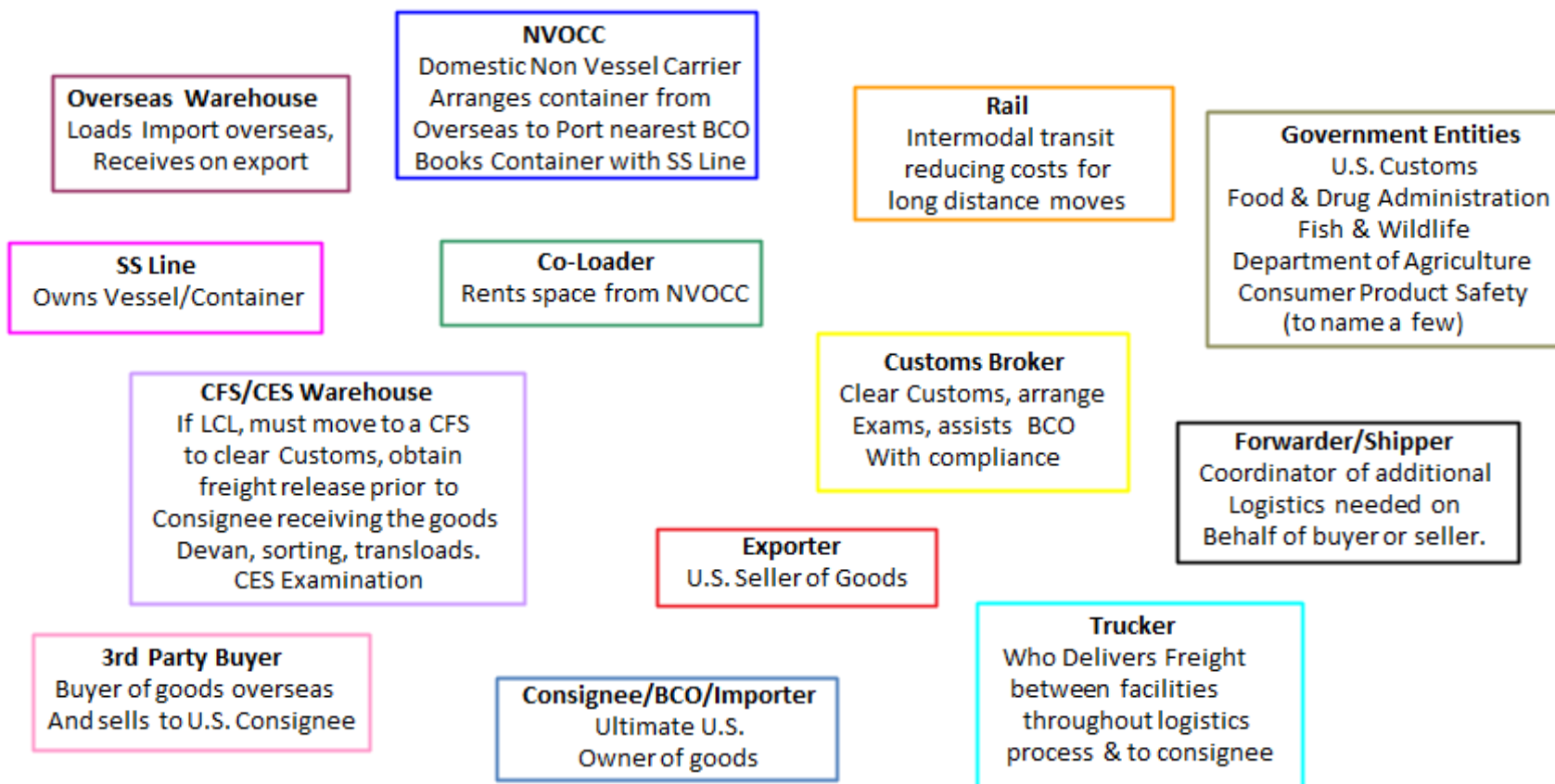
- A CES is an inspection warehouse chosen by CBP designated for government entities to investigate cargo under examination.

CFS (Container Freight Station)

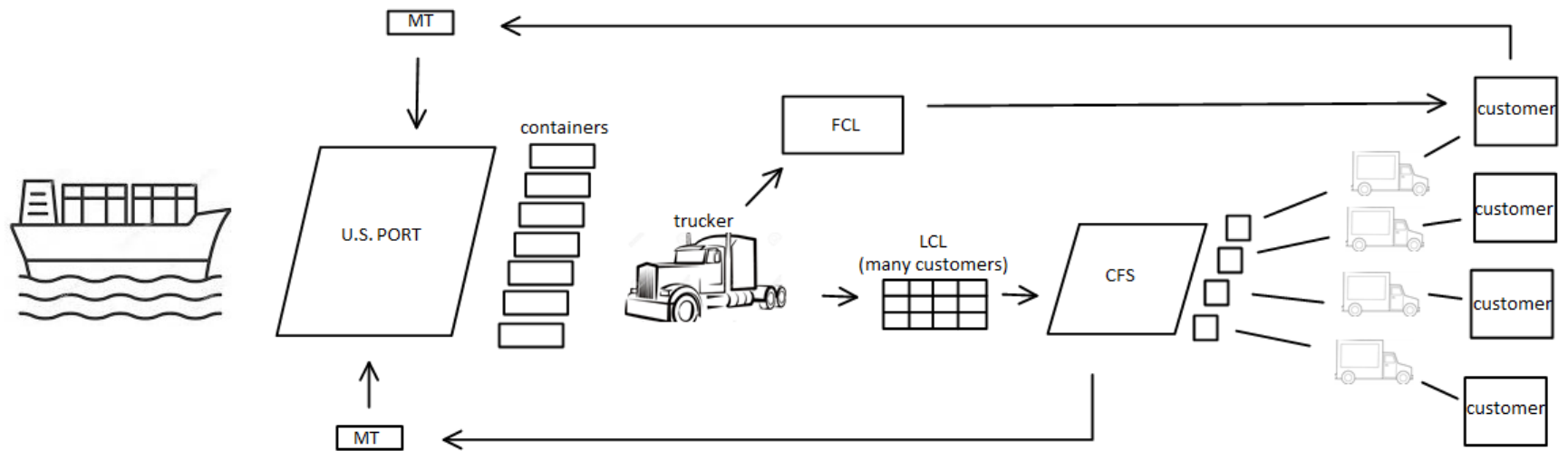
- A CFS facility is a warehouse licensed by CBP where cargo can devan and remain in safe possession while awaiting proper releases before moving about the country or exporting.

WHO ARE THE PLAYERS?

Some but not limited to...



IMPORTS: LIFE AFTER THE BOAT



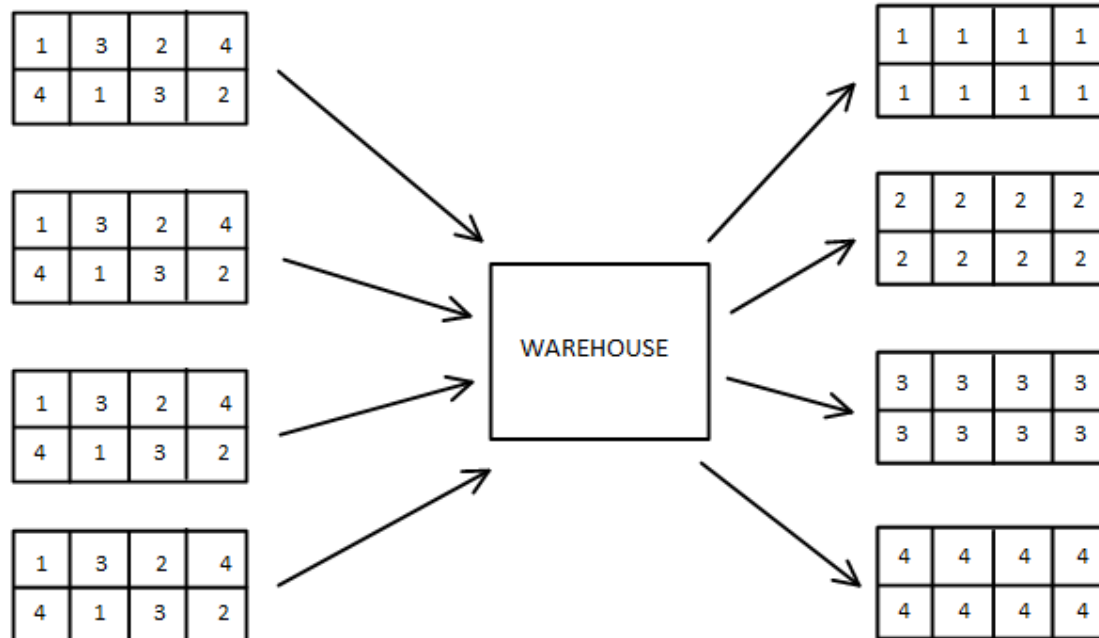
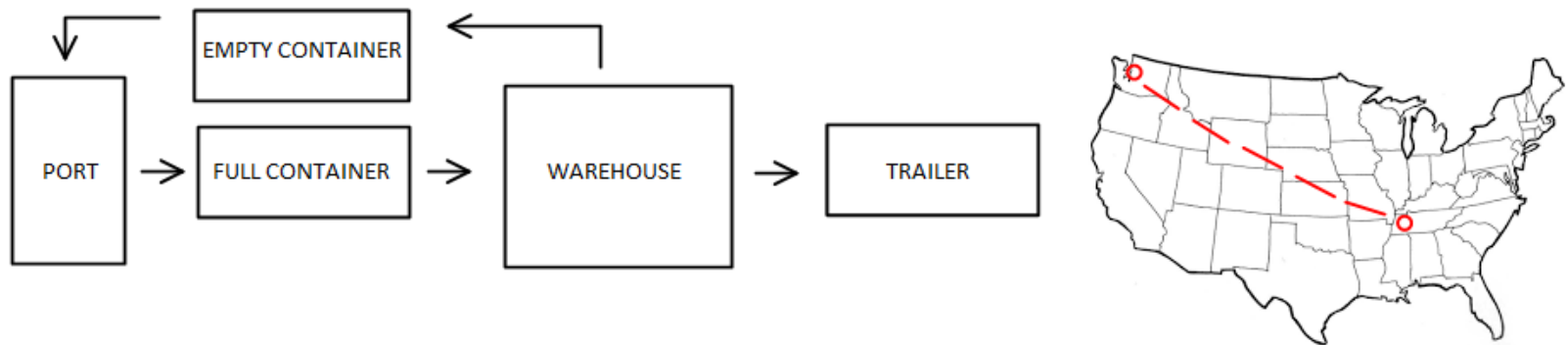
CFS DOCUMENTATION INVOLVED

- Container Manifest (Necessary for creation of PTT, Trucking and Devanning)
Breakdown of itemized shipments based on AMS HBL, markings, pieces, weight/volume.
- PTT (Permit To Transfer) - Move cargo inner port FCL & LCL.
- 7512 CPB Forms
 - IT (Immediate Transportation) – Authorization to move cargo Port to Port
 - IE (Immediate Export) – Authorization to export cargo out of same port imported through
 - T&E (Transportation & Exportation) – Authorization to transfer cargo port to port & export
- Carnet ("Cargo Passport") - Temporary import/export document
- ACE Summary
(many codes authorizing status of clearance with CBP)
- Turnover Letter
Release of cargo from NVO, must obtain prior to release LCL
- D.O. or B.O.L. (Delivery Order or Bill Of Lading)
Authorization of Trucker assigned for transit, billing terms defined, declares place of delivery.

RISKS & CHALLENGES INVOLVED

- Mis-ships
- Damages
- Injuries
- Penalties
- Real Estate
- Labor
- Congestion
- Insurance
- Equipment Upkeep
- Technology Turnover
- Abandoned Cargo
- Natural Disasters

TRANSLOAD VS. CROSSDOCK SOLUTIONS

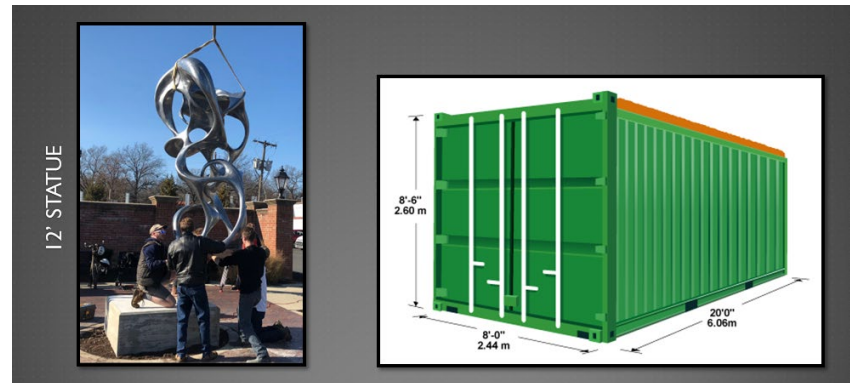


LCL EXPORTS

How Do I Prepare In Unknown Territory?

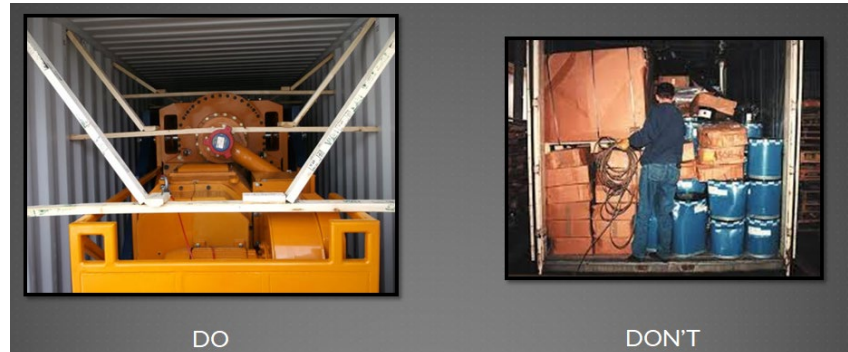
1. Making sure my trucker has all the booking information.

2. Will my cargo fit in an ocean container?

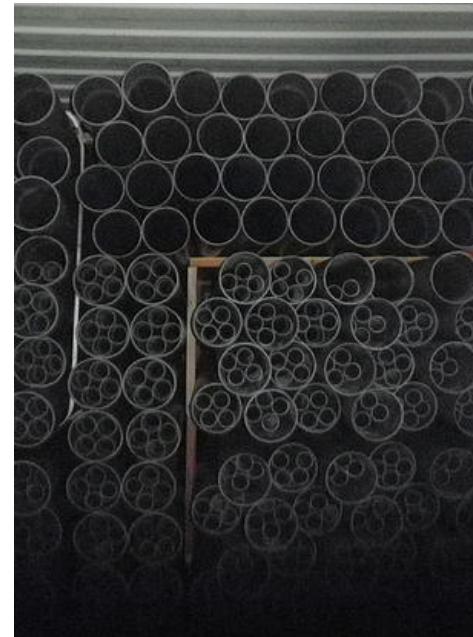


3. Is my cargo packaged properly for the commodity?

4. Are the parties I am working with trusted, skilled partners?



BEHIND THE SCENES





Lions and Tigers and Bears... Oh My!!!

My freight has been flagged for exam, what happens now?

- Exam site need to know the details, and no... CBP does not tell us.

Documents Required For CES Before We Can Accept Goods

- Delivery Order letting us know to transfer or who we can expect delivering to us.
- ACE Results reflecting the HOLD along with Inbond Authorization if applicable.
- Terms and Conditions understood and signed.

Customs Exam – We notify CBP of arrival

FDA Exam – You notify FDA of arrival through ITACS

F&W Exam or any other Agency – You notify your inspector of arrival

We do not get access to the inspectors schedules for exam, nor can we push them.

- Exam site provides the secure facility, management and labor to handle the physical unloading and loading of the cargo.
- Once cargo is released, it will reflect in ACE, ITACS or notification to you from inspector.
- We do not get notified by the agency and need your assistance to provide the release.
- Provide final Delivery Order to move goods outbound.
- Pay the fees associated

QUESTIONS?

YOUR WAREHOUSING & TRANSPORTATION
SPECIALISTS FOR THE NORTHWEST REGION



**A NEUTRAL TRADE
TRUSTED PARTNER**