



THE NORTHWEST
SEAPORT ALLIANCE
Gateway to Solutions

NW Seaport Alliance



NW Seaport Alliance 2018

Key Service Objectives

Increase Cargo Velocity



Reduce Congestion and Improve Service Levels



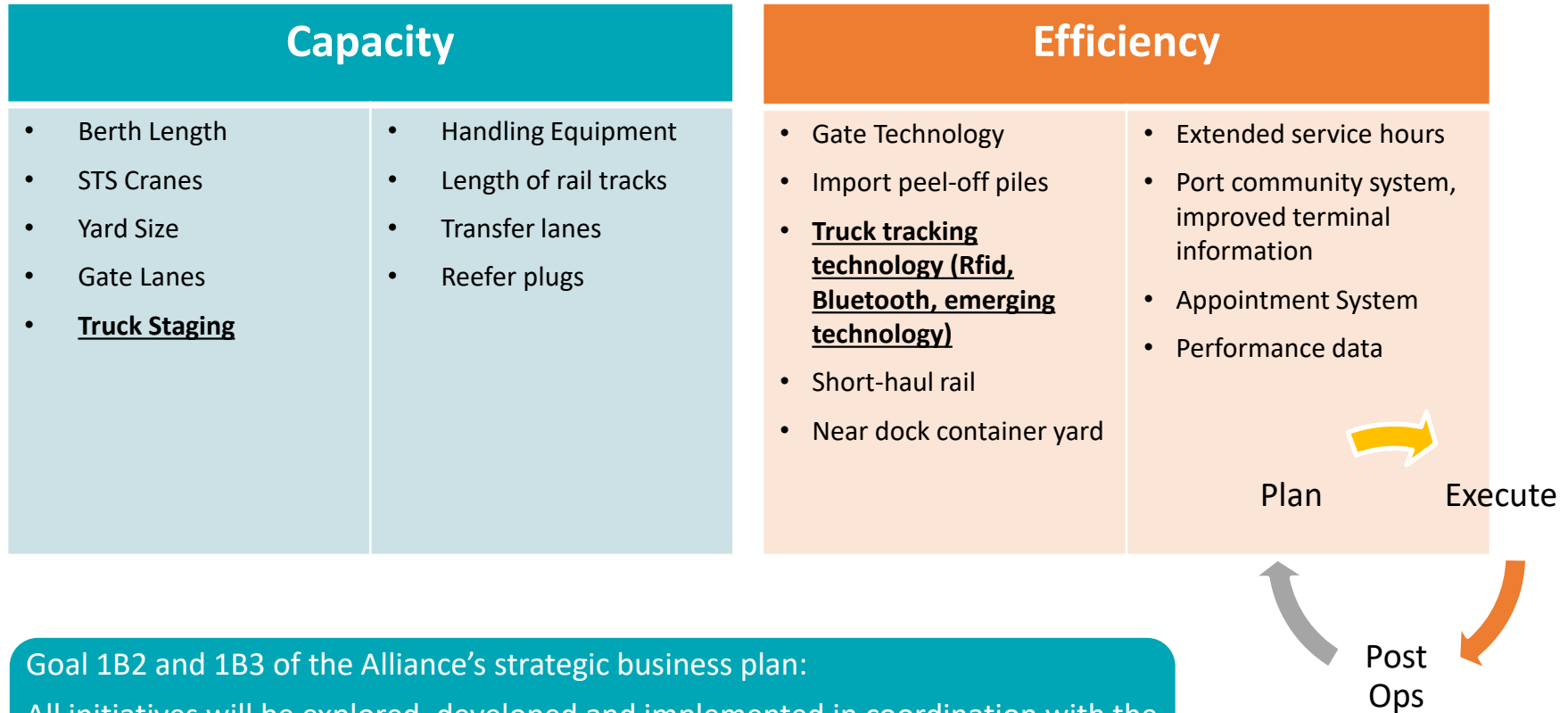
Improve Communication and Cargo Movement Visibility



Continued Focus on Environmental Sustainability



Improvement Initiatives



Goal 1B2 and 1B3 of the Alliance's strategic business plan:

All initiatives will be explored, developed and implemented in coordination with the supply chain stakeholders through the Operations Service Center and Executive Advisory Council.

What is a Port Community System?

“A Port Community System is not an IT project, but a change management project.”

**Javier Gallardo, Portic (IPCSA), Red VUCE meeting,
4th December, Cusco, Peru**

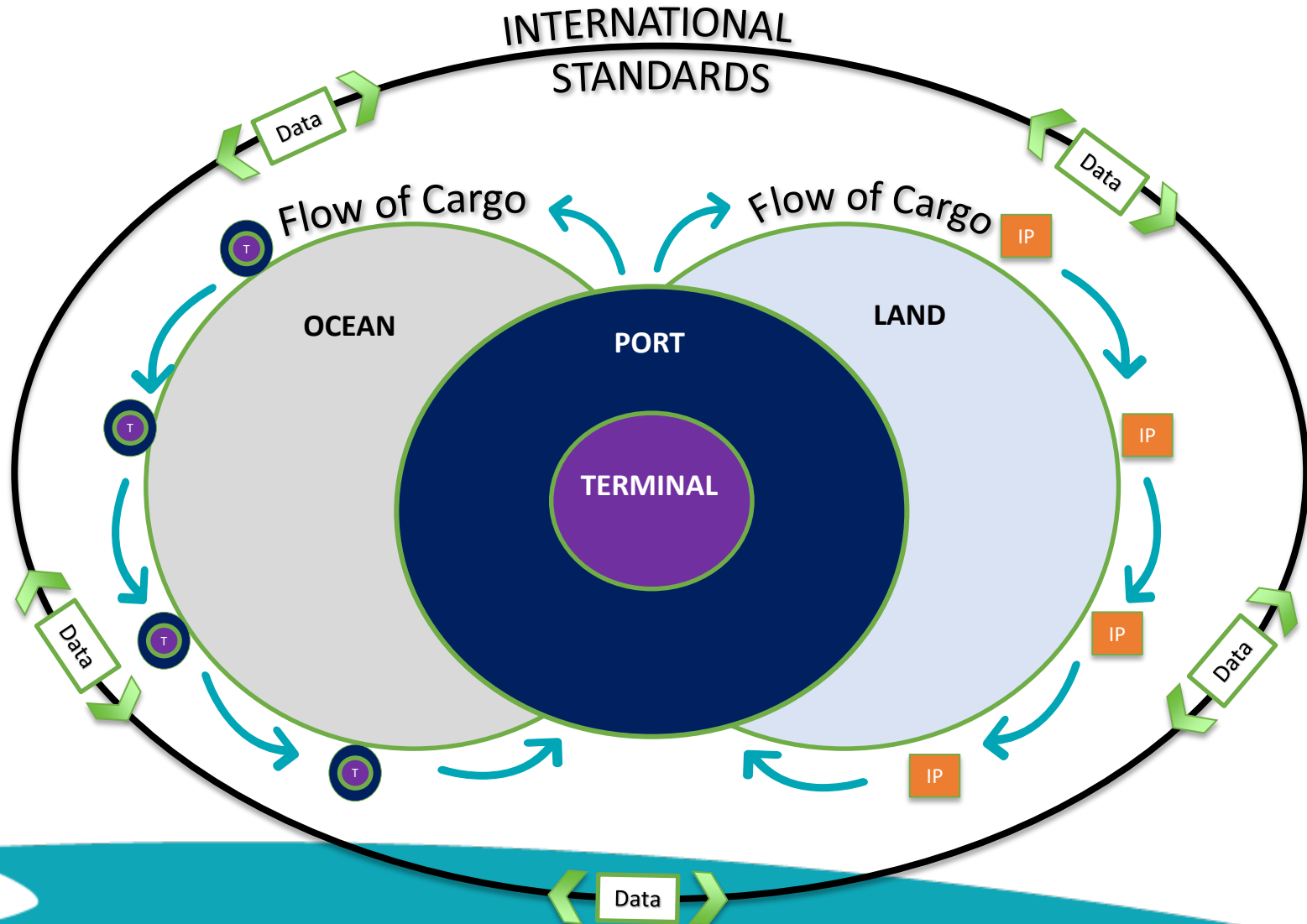
A Port Community System is:

- a neutral and open electronic platform enabling intelligent and secure exchange of information between public and private stakeholders in order to improve the competitive position of the sea and air ports' communities.
- optimises, manages and automates port and logistics efficient processes through a single submission of data and connecting transport and logistics chains.

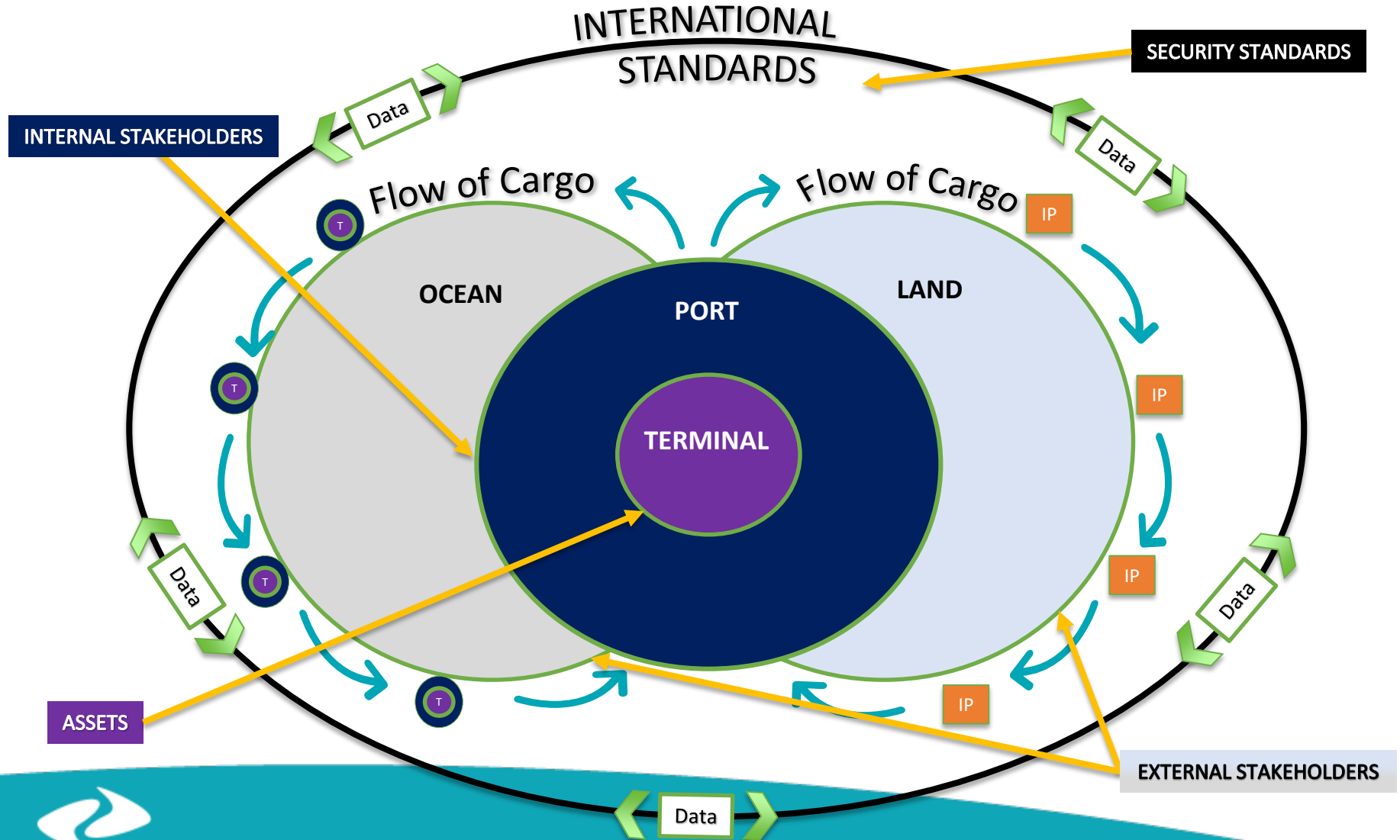


COMMUNITY PORTAL

DATA AND CARGO FLOW

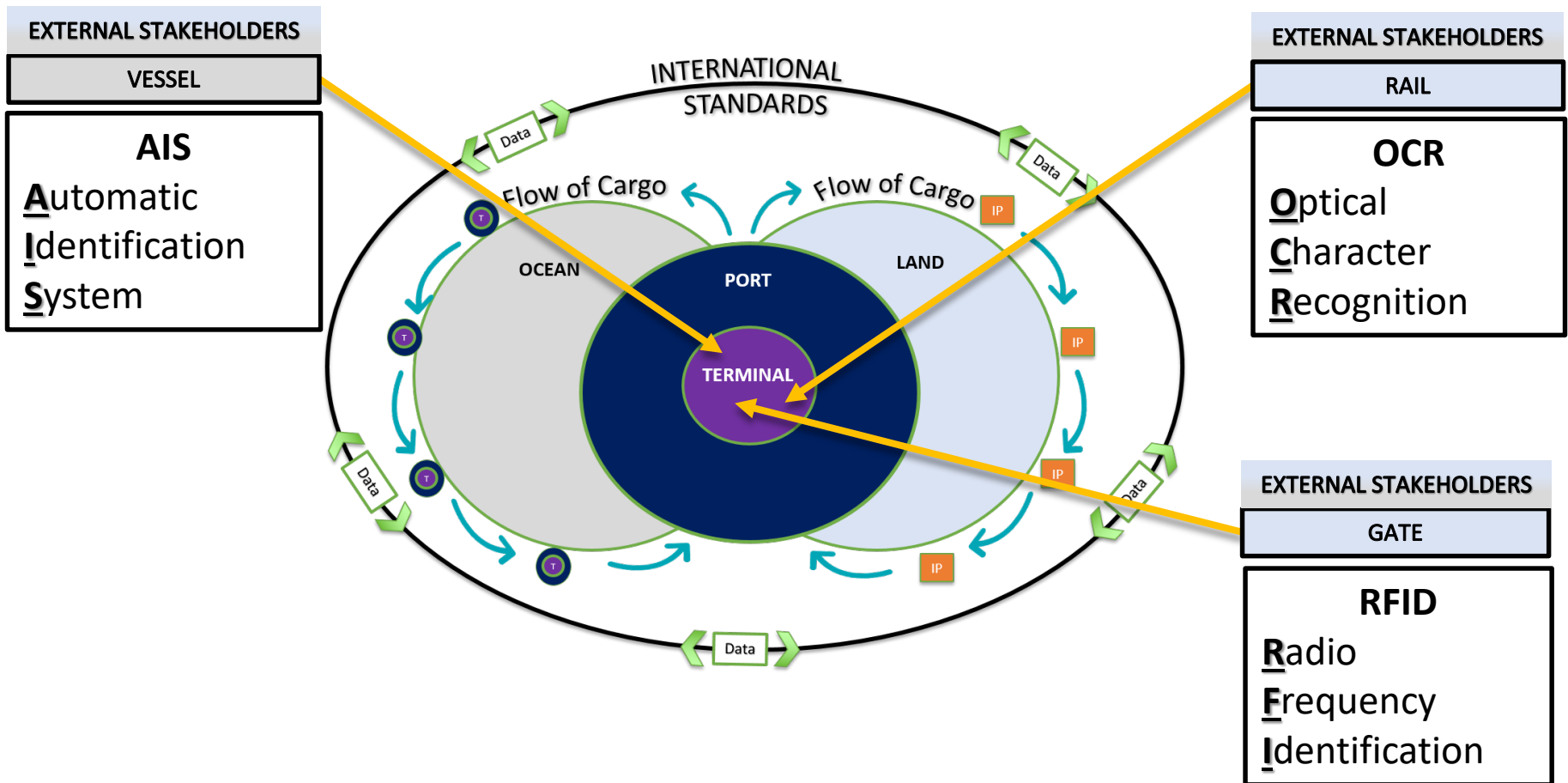


COMMUNITY PORTAL





COMMUNITY PORTAL


DATA FLOW IN REAL TIME




NWSA's Existing Information Portal


www.NWSeaportAlliance.com








TerminalsTruckersShippersStats & Stories ▾About ▾NewsroomCareers


Q  Select Language ▾

 Gate Cameras

 Terminal Updates


 Vessel Schedule

 Trucker Resources



I'M A TRUCKER

I need traffic info, terminal, camera & gate updates




I'M A SHIPPER

I need vessel schedule & facilities and services info


Your gateway to solutions

The Northwest Seaport Alliance delivers less congestion, closer proximity to Asia and deep ties to Alaska, as well as award-winning ease of doing business. Our naturally deep-water harbors and ability to handle a wide range of cargo make us ideally suited to meet the growing needs of Pacific Rim trade.



First time shipper?

We've got you covered



Keeping the trucking community informed

Stay informed about upcoming construction work, terminal holiday schedules and other issues that may impact access to our terminals. Text **NWSA TRUCKS** to **468311** to receive updates via text message (message and data rates apply).

Estimated Truck Turn Times by [PierTrucker.com](#)

Place	2 hrs	24 hours	7 days	30 days	90 days
T18	1hr 50m	1hr 45m	1hr 45m	1hr 45m	1hr 40m
Husky	2hr 55m	2hr 30m	1hr 45m	1hr 45m	1hr 45m
PCT	2hr 35m	1hr 55m	2hr 20m	2hr 40m	2hr 25m
T46	1hr 35m	1hr 20m	1hr 30m	1hr 25m	1hr 25m
WUT	1hr 45m	1hr 30m	1hr 20m	1hr 25m	1hr 25m
T30	2hr 0m	2hr 5m	1hr 25m	1hr 25m	1hr 25m
EST (TCT)	2hr 40m	1hr 30m	1hr 25m	1hr 15m	1hr 15m
Matson (Tac)		1hr 0m	1hr 5m	1hr 0m	1hr 0m

October 15, 2018

Clean Truck Program

- Trucks with 2007 engine or equivalent retrofits required as of Jan 1, 2018
- Enforcement begins April 1, grace period until Jan 1, 2019
 - North Harbor – Technology (RFID)
 - South Harbor – Manual (Sticker)
- North Harbor RFID expansion program to South Harbor
- Add readers at terminal out gates to track turn times

RFID Tag Photo?>>>>>>>



SEPTEMBER 2018:

66%

**COMPLIANT
TRUCKS**

**DEADLINE:
DEC. 31, 2018**



**THE NORTHWEST
SEAPORT ALLIANCE**

Straddle Carrier RPM



Labor

- Over the past year the PMA/ILWU have agreed to the following increase in manpower
 - Registration of Casuals to Registered Longshore 90 (increase by 8 in July)
 - Casual hiring of 270 (agreed to 24 additional this month)
- Registration (90 total)
 - 82 are complete
 - 8 to be complete in August
- Casual Hiring (270)
 - 205 have been hired and are available for dispatch
 - 115 are trained in tractor
 - 65 will go through orientation in August à Available for dispatch by September 1st



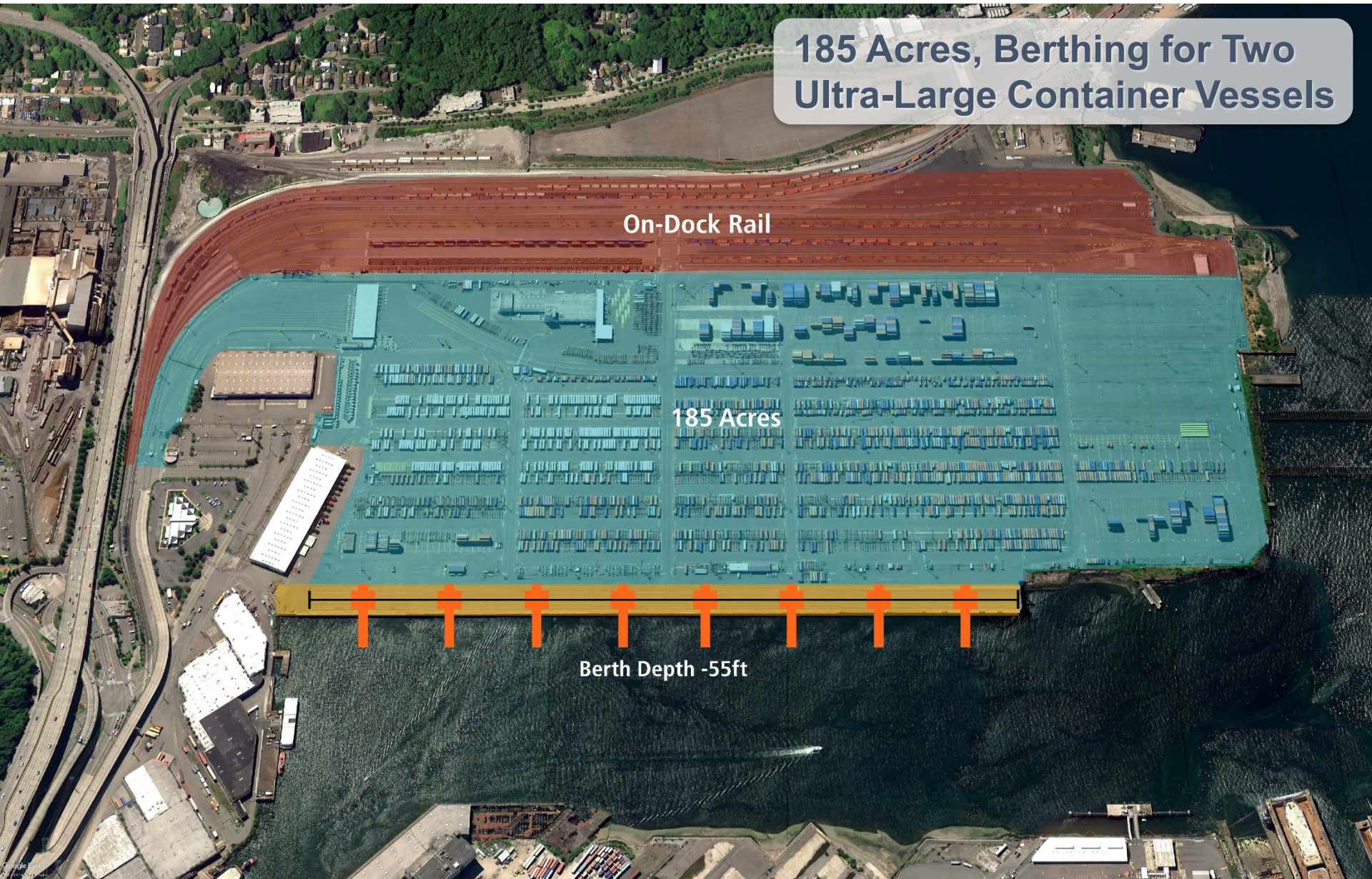


Key Infrastructure: Husky Terminal

Invest in Key Infrastructure

FUTURE TERMINAL 5 (NORTH HARBOR)

185 Acres, Berthing for Two
Ultra-Large Container Vessels



Seattle Harbor Deepening Project



East Waterway

Deepening -51' to -55' MLLW

West Waterway

Deepening -51' to -55' MLLW

T-46

**Dock Strengthening
& Berth Deepening**

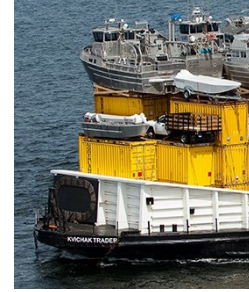
T-5 Modernization Project

Power Upgrades

T-18

T-30

*Duwamish
River*



Thank you!



THE NORTHWEST
SEAPORT ALLIANCE
Gateway to Solutions

Zachary Thomas

