



# **Columbia River Customs Brokers & Forwarders Association**

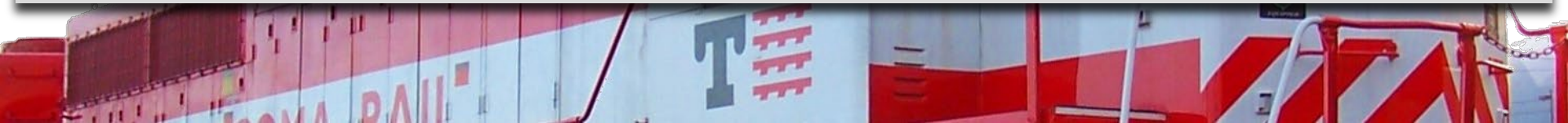
**Todd Vincent, Terminal Manager**

**October 24, 2018**

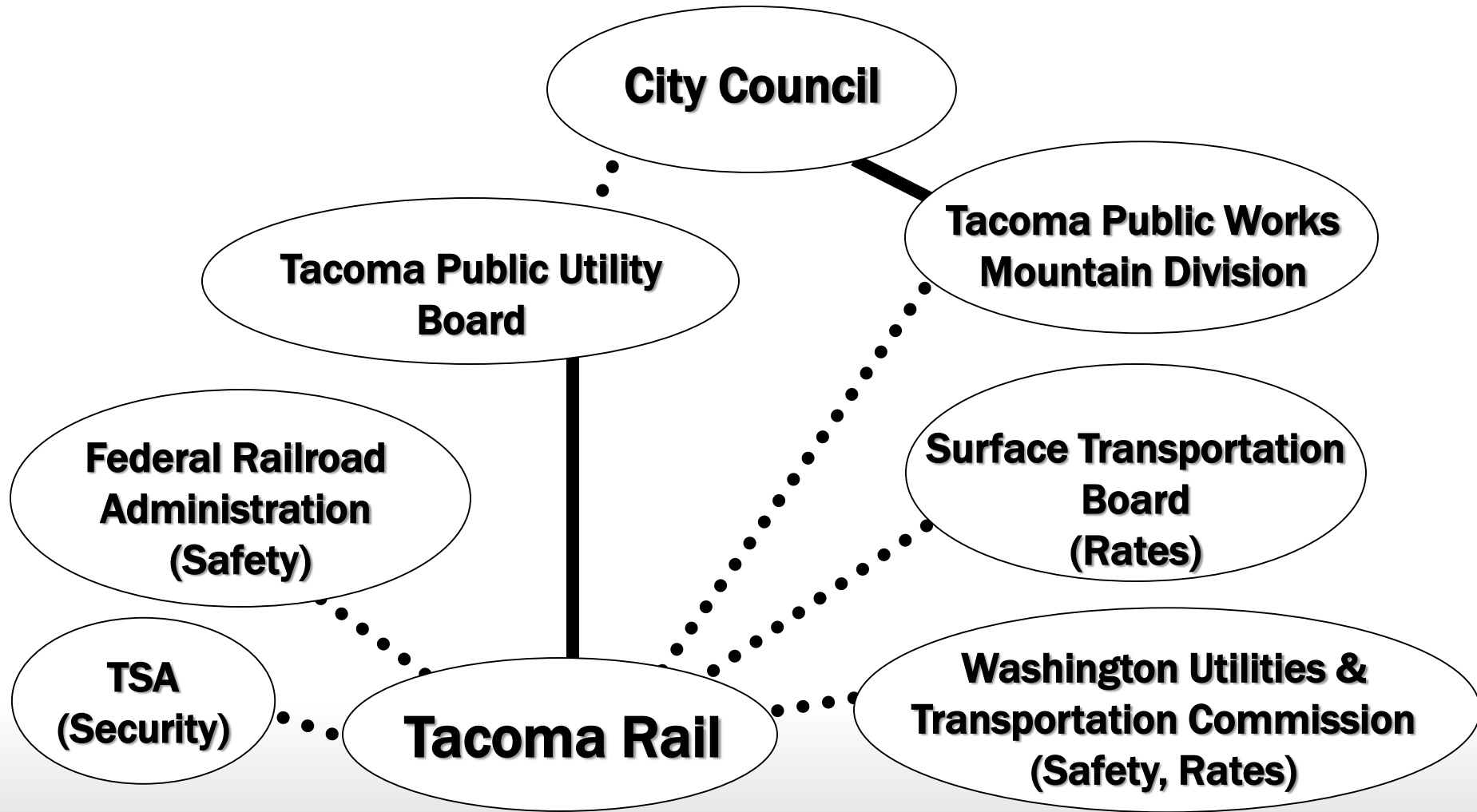


# General Information

- **Exclusive Rail Service Provider for the NWSA**
  - Interchange daily with BNSF and UPRR
  - 125 Miles of Track
- **\$30 Million/year Gross Revenues**
  - Rate Payers
  - \$4M in taxes
- **121 Employees**
- **Train Operations 24/7**
- **16 Locomotives**
- **100 % on-time intermodal performance in 2017.**
  - 170,000 carloads per year



# Our Hierarchy





The map illustrates the proposed rail network in Tacoma, Washington, overlaid on a street map. A legend in the top left corner identifies various rail types: Port of Tacoma (blue), Planned Rail (light blue), Tacoma Rail (dark blue), BNSF (green), UPRR (red), Private Rail (purple), and City of Tacoma (yellow). Three large gear-shaped callouts indicate ownership percentages: BNSF at 65%, Tacoma Rail at 50%, and UP at 35%. The map also shows major highways like I-5 and SR-520, and directions to Portland, Everett, and Seattle.

**THE NORTHWEST SEAPORT ALLIANCE**  
*Gateway to Solutions*

**Tacoma Rail**

**BNSF 65%**

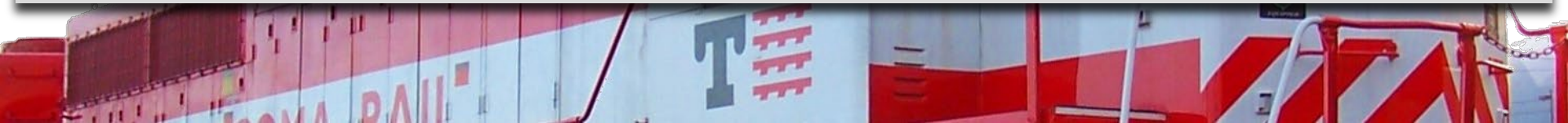
**UP 35%**

- **95% of our business originates/terminates on the first 5 miles of our railroad network**
- **Business split 2005**  
**75% Intermodal**  
**25% Commercial**
- **Business split 2017**  
**46% Intermodal**  
**54% Commercial**

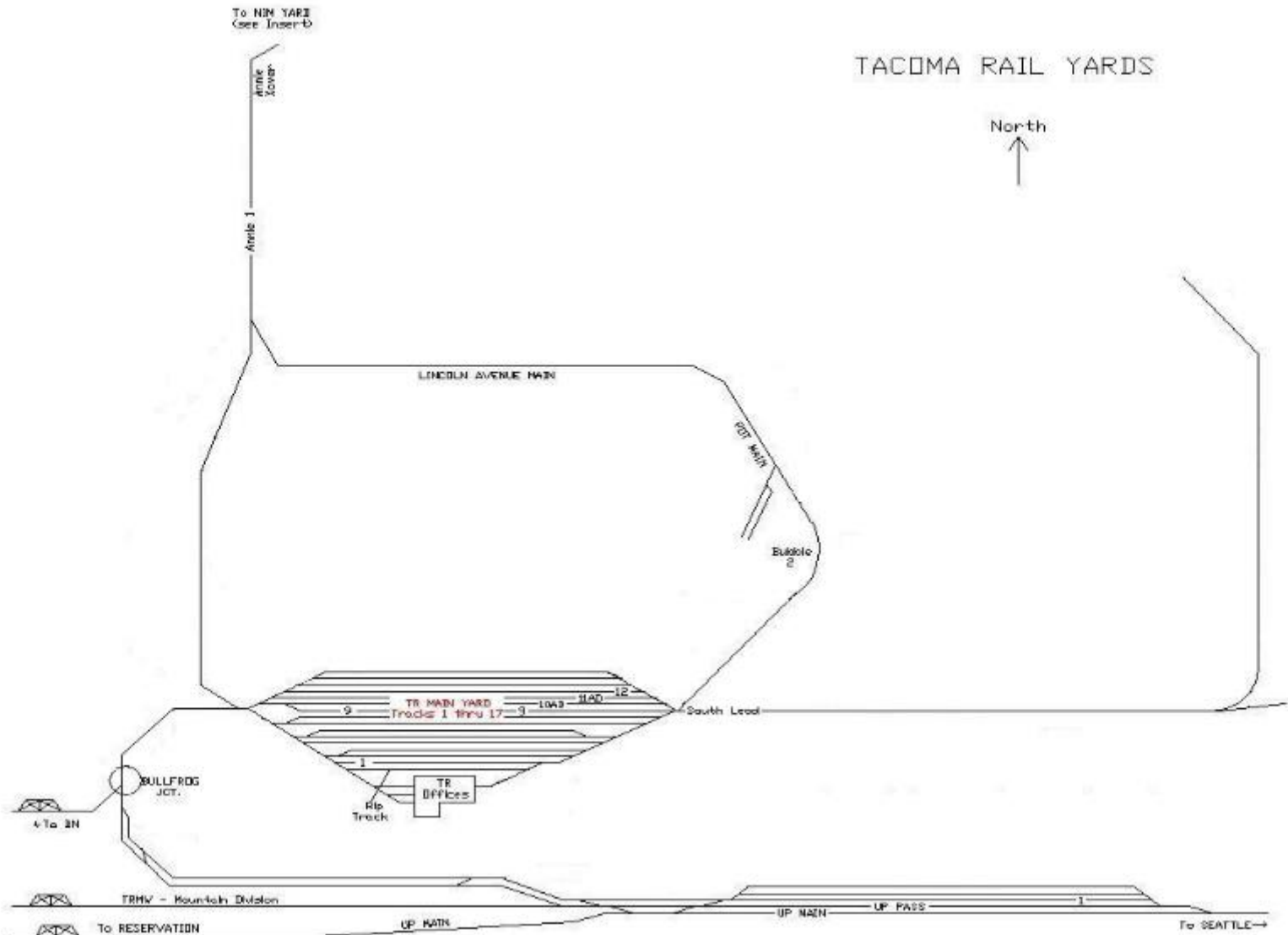


# Beyond the Port of Tacoma

- **Lakewood Subdivision**
  - Owned by Sound Transit
  - Previously BNSF
  - Tacoma Rail owns freight franchise
- **Mountain Division**
  - Extends south near Tacoma Dome to Frederickson and beyond

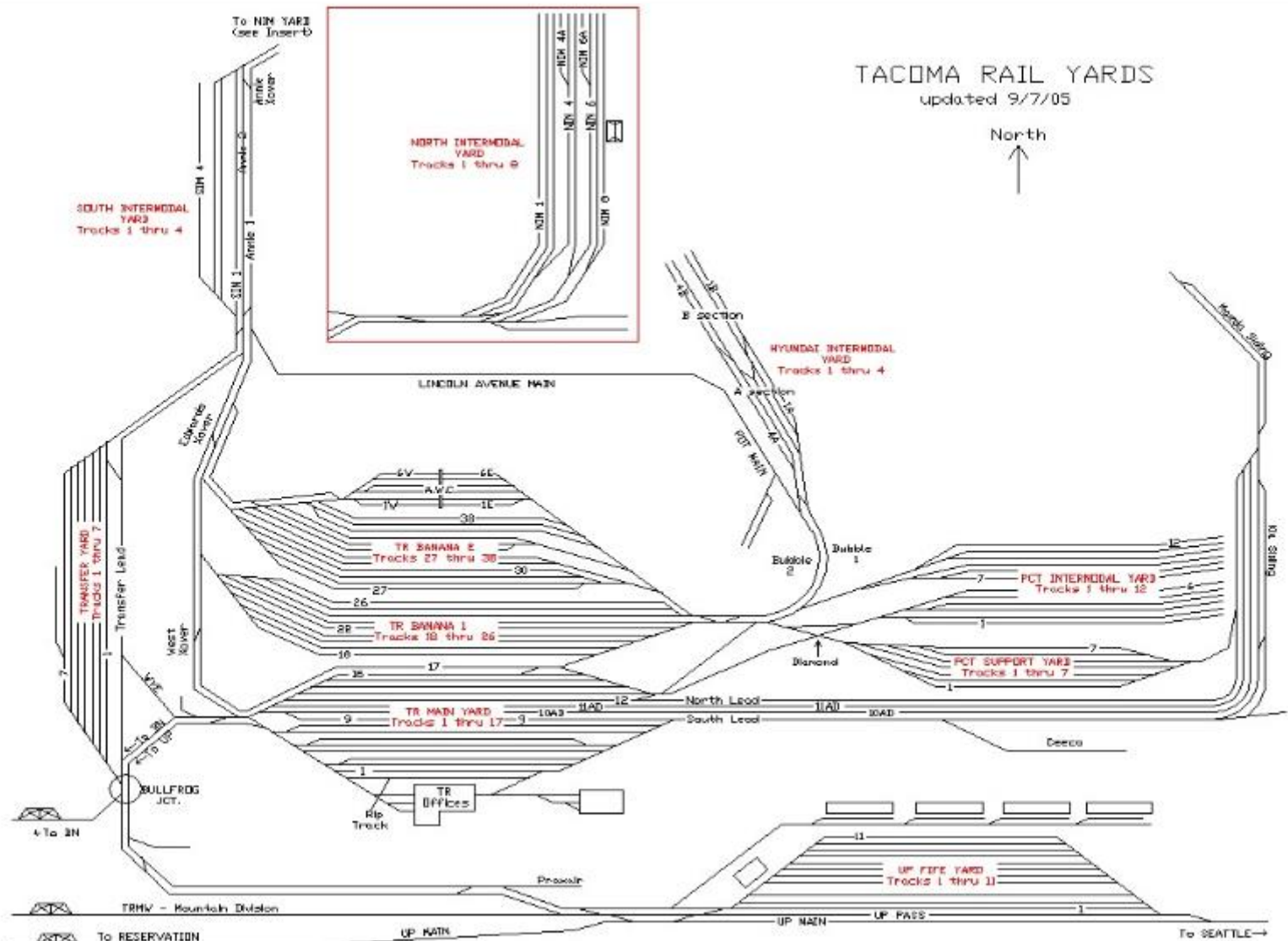


# Track Infrastructure - 1980



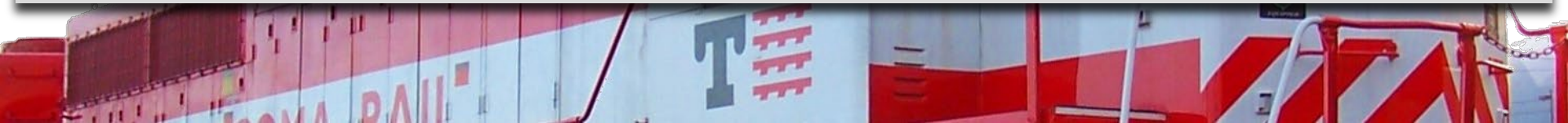


# Track Infrastructure: Tideland's 2007



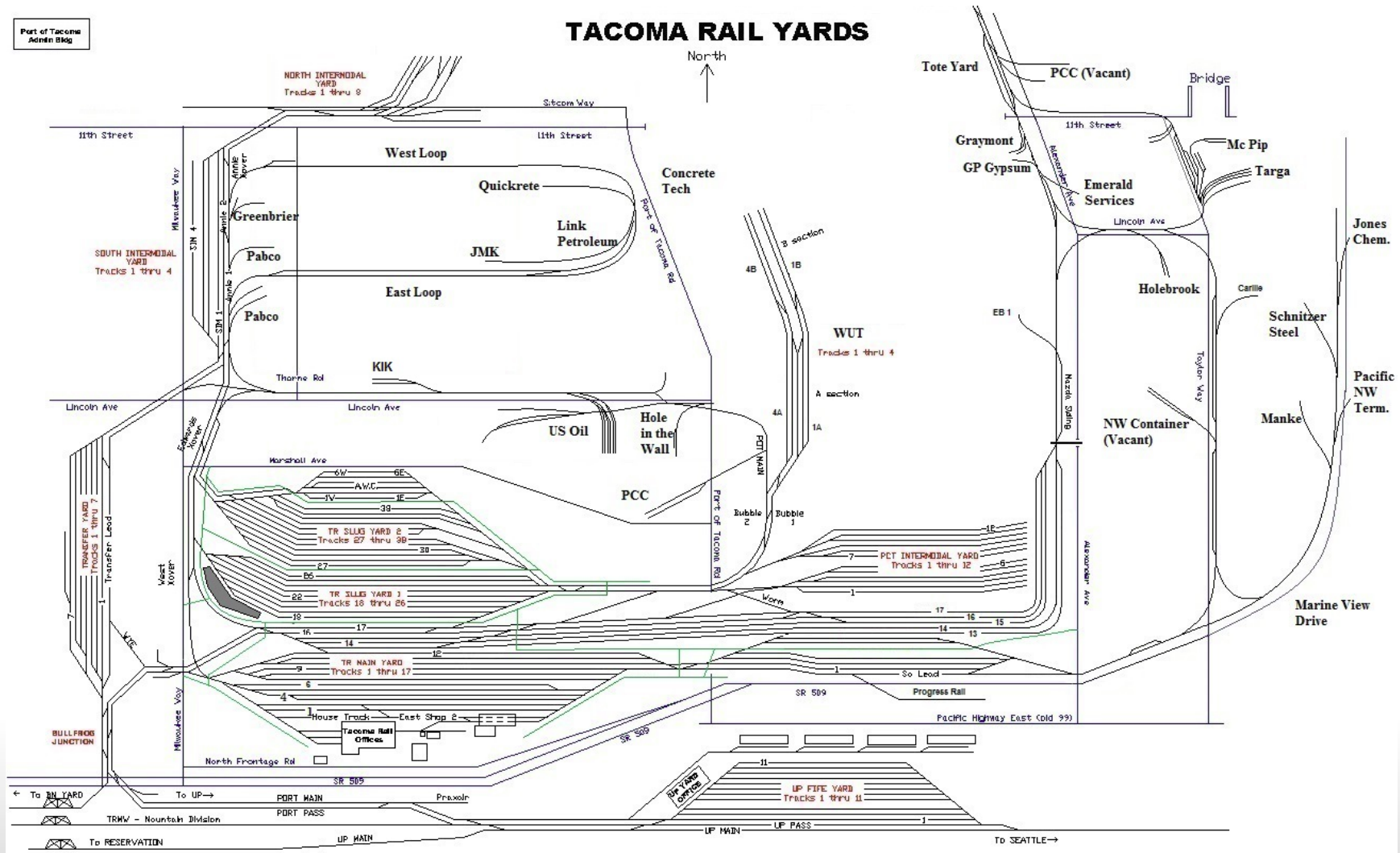
# Tacoma Rail/Port of Tacoma – Interlocal Agreement

- Completed in May 2017 the North Lead Rail Improvements project added more than 4 miles of new track to the rail corridor adjacent to State Route 509 between Milwaukee Way and Alexander Avenue.
- Crews also demolished more than 2.5 miles of old rails while realigning all of the facility's support tracks. As a result, operational efficiency improved by 34 percent. Trains can now depart and arrive at the same time, reducing rail congestion.
- The \$18 million joint project — funded in part by the Washington State Department of Commerce – builds on the alliance's strategic plans to accommodate shipping growth in the South Harbor over the next 10 years.





# Track Infrastructure - 2018



# Tacoma Rail: The Full Service Provider

